

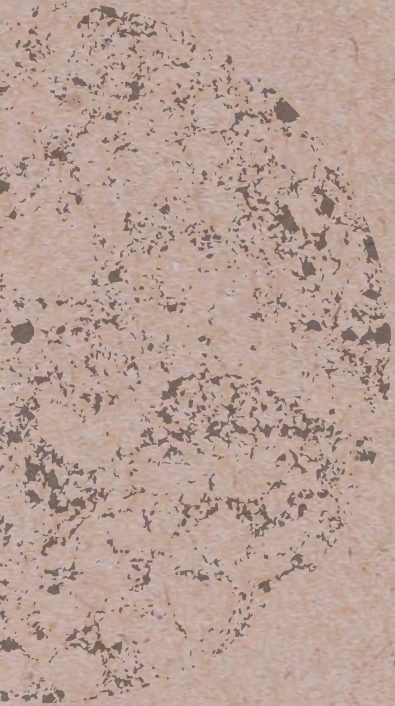
STONE
ITALIANA



1979
2019

color
collection





STONE
ITALIANA

100% Made in Italy

INDEX

02-05	History
06-11	Mission
12-13	Product Quality
14/19	Finishes
15-18	Color Collection
20	Terrazzo
21	Graniglio
22	Craken
23	Native
24-25	Cartapietra
26	Cementino
27	Dna Urbano
28-29	Sizes_Slabs and Tiles
30-31	Portfolio
32	Technical Data



DEDICATION
TO EXCELLENCE
SINCE 1979

40TH YEAR
ANNIVERSARY



Stone Italiana was established in Verona, Italy, in 1979, and specializes in the production of innovative materials for interiors and furnishing: recomposed marble as a cutting edge alternative to the traditional natural products on the market. It is the first company in the world to begin manufacturing engineered marble, and then engineered stone (quartz).

Over the years the company has changed the perceived use of stone, rediscovering its uniqueness, non-repeating patterns and a range that can only be found in nature. Since 1979, Stone Italiana has completed important work projects with surfaces tailored and customized in both colors and content. The continuous creation of new products and research into production technology are passionately pursued by the same Italian family that founded the company almost 40 years ago.

S
S
A
R
Y



STONE ITALIANA 100% MADE IN ITALY

Stone Italiana's corporate headquarters are in Verona, Italy. All products are manufactured in two plants, located in Zimella, in the province of Verona, and Villesse, in the province of Gorizia.

Quality has always been our top priority and we operate in compliance with management processes ISO 9001 and OHSAS 18001 Security standards, as well as Environmental Management System ISO 14001.

On the basis of these standards, Stone Italiana has promoted a corporate responsibility within its supply chain.

Sustainability means attaining our quality standards in the materials we manufacture.



WHAT SUSTAINABILITY MEANS TO US

Sustainability is knowing how materials are made, where they are produced and the impact on the environment, using raw materials of certified quality and monitoring processes.

All these elements are essential to the credibility of any company. All Stone Italiana products for interior use have been awarded the GREENGUARD GOLD certification for their low VOC emission and are NSF 51 certified for food contact, making them ideal for food preparation. Stone Italiana's products can fulfill LEED® credits, contributing toward the certification of building projects.

Our R&D Department works relentlessly to create products that contribute to a sustainable economic model, with decades-long expertise and knowledge in turning innovative ideas into industrial processes. This approach supports the development of a system where resources are reutilized in the production cycle.

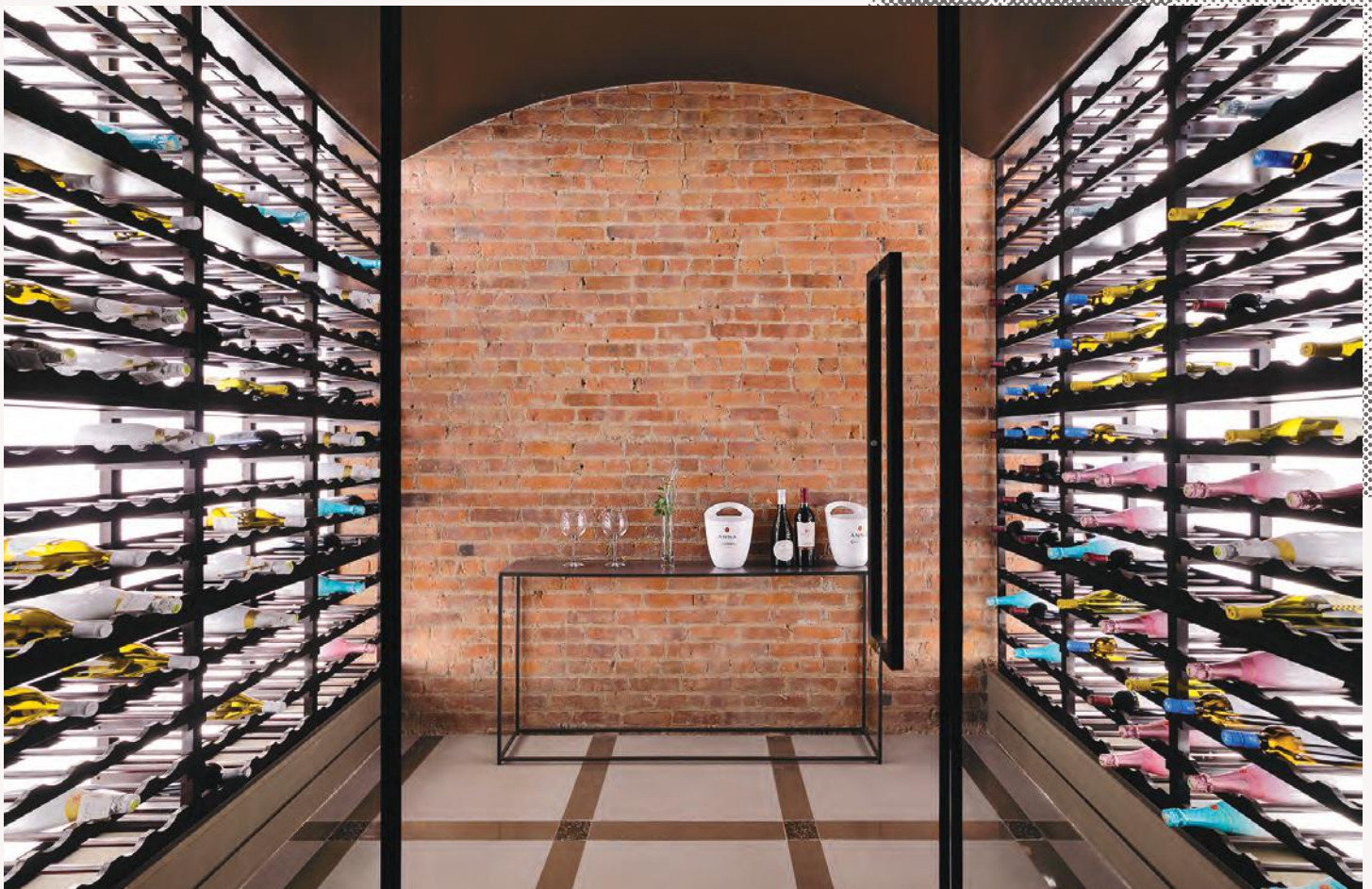
OUR MISSION

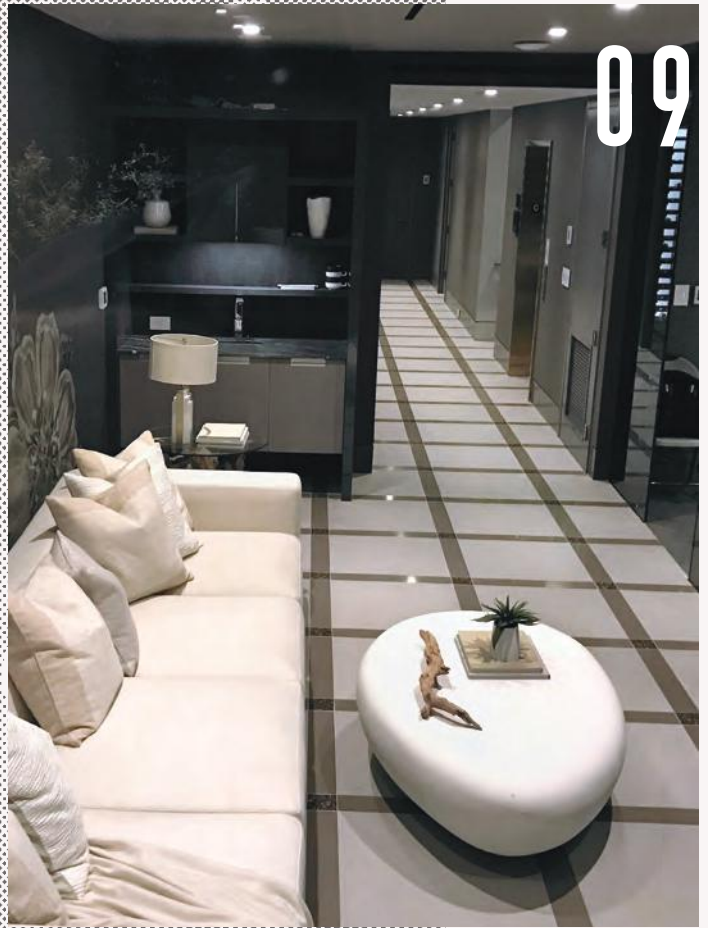
WE LOOK INTO THE FUTURE
THROUGH CONTINUING
INNOVATION:

- Innovative Projects
- Product Quality
- Custom Products
- Flexible Production
- Original Ideas
- Customers and Suppliers Loyalty
- Human Resources Training



OUR MISSION IS TO PROVIDE
A TANGIBLE CONTRIBUTION TO
THE ARCHITECTURAL AND INTERIOR
DESIGN COMMUNITY BY COMBINING
AESTHETICS AND TECHNOLOGY
WITH QUALITY AND CARE FOR
THE ENVIRONMENT.











PRODUCT QUALITY

For Stone Italiana, QUALITY can only be achieved with a strict selection of raw materials, the most technologically advanced equipment and the trust and collaboration of its suppliers and its customers. Stone Italiana offers its expertise in the design, service, planning and construction of projects of any size. Above all, Stone Italiana puts its passion for new ideas and its creativity to create unexpected styles in the world of handmade quartz craftsmanship.



FINISHES

NAME	POLISHED (GLOSS)	HONED 2.0 (GRAIN)	TEXTURED 2.0 (ROCFACE)	TEXTURED 14.15 (JAIPUR)
CANDIDO	•			
OROPURO	•			
VIRGO	•			
CRISTAL WHITE	•			
BRILLANTE BIANCO	•			
LIDO	•			
BASE	•			
CRISTAL CREAM	•			
ASH	•			
PITTI	•			
BRILLANTE NERO	•			
SUPERBLACK	•			
CARTAPIETRA				
SUPERWHITE 13	•	•	•	
SABBIAMARINA	•	•	•	
BASIC	•	•	•	
NOISETTE	•	•	•	
GREIGE	•	•	•	
FANGO	•	•	•	
GRIGIO MILANO	•	•	•	
TAUPE	•	•	•	
TORBA	•	•	•	
IMPERIALE 05	•	•	•	
KSTONE				
KSOUL	•	•		
KGOLD	•	•		
KBROWN	•	•		
KWORK	•	•		
KSPACE	•	•		
KART	•	•		
NATIVE				
BIANCO ARTICO	•			
BIANCO TASMANIA	•			
BIANCO CEMBRO	•			
BIANCO ATLANTIC	•			
GRIGIO NORDICO	•			
NERO CONTINENTAL	•			

COLORS



candido polished



oropuro polished



virgo polished



sabbiamarina polished or honed 2.0



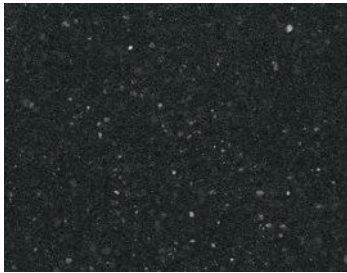
sabbiamarina textured 2.0



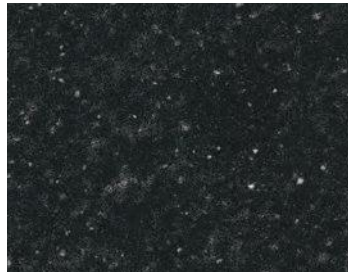
basic polished or honed 2.0



basic textured 2.0



imperiale 05 polished or honed 2.0



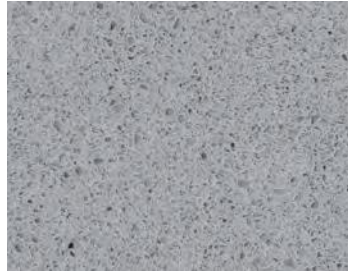
imperiale 05 textured 2.0

KSTONE



ksoul polished or honed 2.0

ECOLLECTION



luna polished



giove polished



terra polished

GRANIGLIO



graniglio bianco polished



graniglio sabbia polished

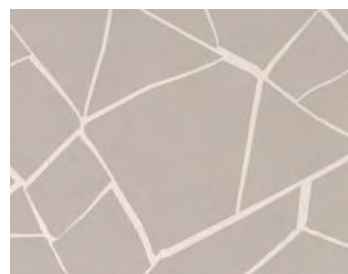


graniglio grigio polished

CRAKEN



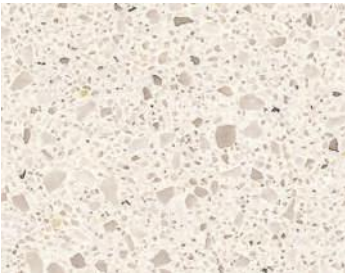
white_gray polished



basic_white polished



white_black polished



cristal white polished



brillante bianco polished



lido polished



base polished



noisette polished or honed 2.0



noisette textured 2.0



greige polished or honed 2.0



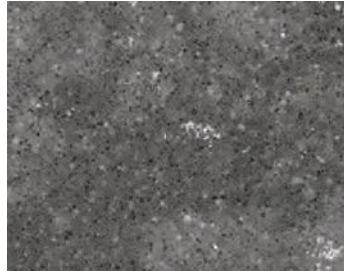
greige textured 2.0



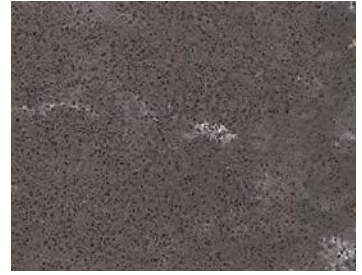
kgold polished or honed 2.0



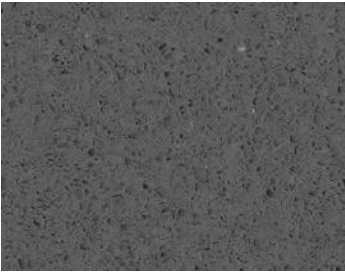
kbrown polished or honed 2.0



kwork polished or honed 2.0



kspace polished or honed 2.0



urano polished

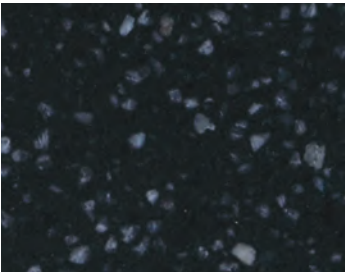
CEMENTINO



industry honed 2.0

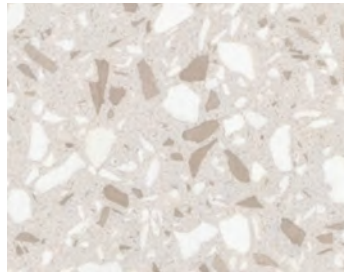


metro honed 2.0

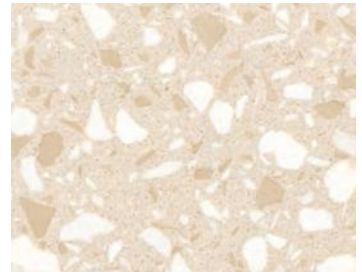


graniglio nero polished

TERRAZZO



terrazzo_white polished or honed 2.0



terrazzo_base polished or honed 2.0



noisette_bordeaux polished



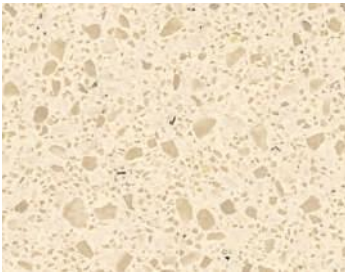
taupe_dark polished



black_white polished



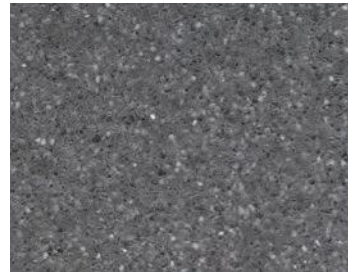
black_brown polished



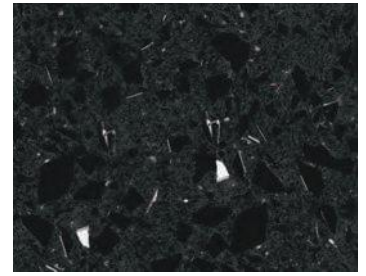
cristal cream polished



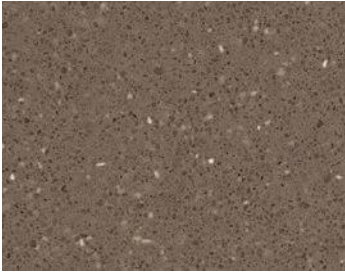
pitti polished



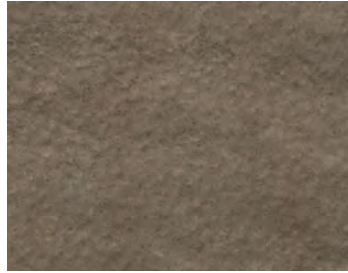
ash polished



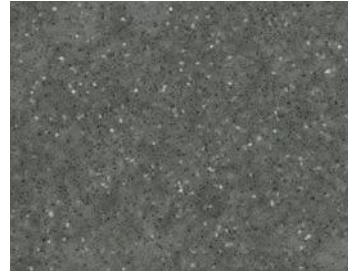
brillante nero polished



fango polished or honed 2.0



fango textured 2.0



grigio milano polished or honed 2.0

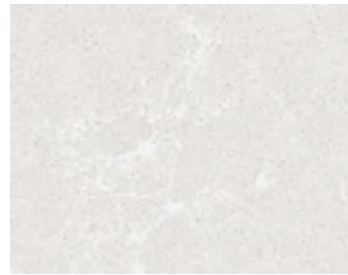


grigio milano textured 2.0

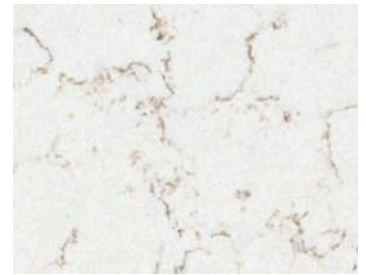


kart polished or honed 2.0

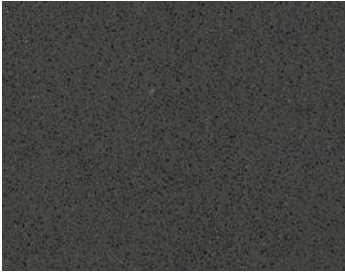
NATIVE



bianco artico polished



bianco tasmania polished



ground honed 2.0

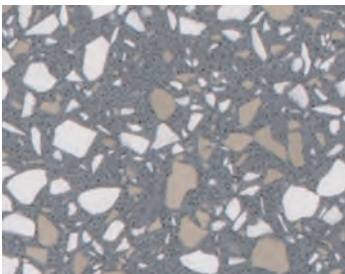
DNA URBANO



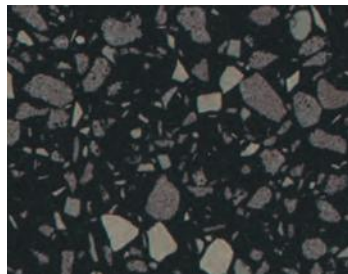
DNA Urbano polished



DNA Urbano honed 2.0



terrazzo_grey polished or honed 2.0



terrazzo_dark polished or honed 2.0

JAIPUR 14.15



thyme 14.15

BASE MARMO



almond white polished



penny lane polished

CARTAPIETRA



superblack polished



superwhite 13 polished or honed 2.0



superwhite 13 textured 2.0



taupe polished or honed 2.0



taupe textured 2.0



torba polished or honed 2.0



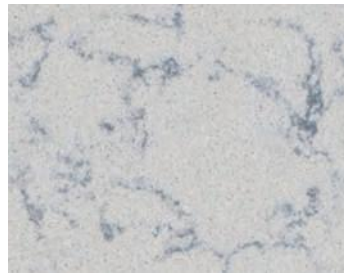
torba textured 2.0



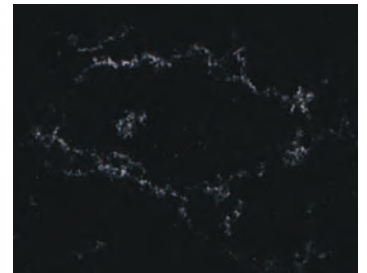
bianco cimbro polished



grigio atlantic polished



grigio nordico polished

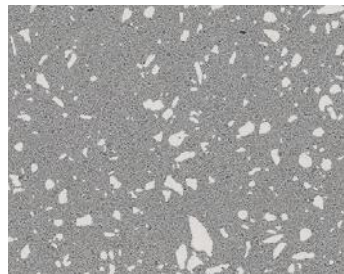


nero continental polished

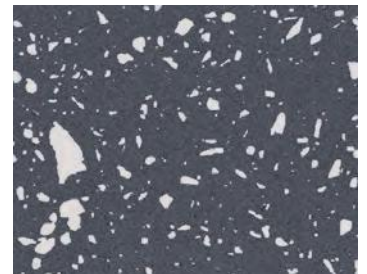
METALLICO



platino polished



zinco polished



acciaio polished



vanilla 14.15



anis 14.15

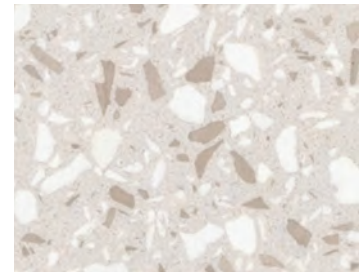


pepper 14.15

NAME	POLISHED (GLOSS)	HONED 2.0 (GRAIN)	TEXTURED 2.0 (ROCFACE)	TEXTURED 14.15 (JAIPUR)
ECOLLECTION				
LUNA	•			
GIOVE	•			
TERRA	•			
URANO	•			
CEMENTINO				
INDUSTRY		•		
METRO		•		
GROUND		•		
DNA URBANO	•	•		
METALLICO				
PLATINO	•			
ZINCO	•			
ACCIAIO	•			
GRANIGLIO				
GRANIGLIO BIANCO	•			
GRANIGLIO SABBIA	•			
GRANIGLIO GRIGIO	•			
GRANIGLIO NERO	•			
TERRAZZO				
TERRAZZO_WHITE	•	•		
TERRAZZO_BASE	•	•		
TERRAZZO_GREY	•	•		
TERRAZZO_DARK	•	•		
JAIPUR 14.15				
THYME 14.15				•
VANILLA 14.15				•
ANIS 14.15				•
PEPPER 14.15				•
CRAKEN				
WHITE_GRAY	•			
BASIC_WHITE	•			
WHITE_BLACK	•			
NOISETTE_BORDEAUX	•			
TAUPE_DARK	•			
BLACK_WHITE	•			
WHITE_BROWN	•			
BASE MARMO				
ALMOND WHITE	•			
PENNY LANE	•			

TERRAZZO

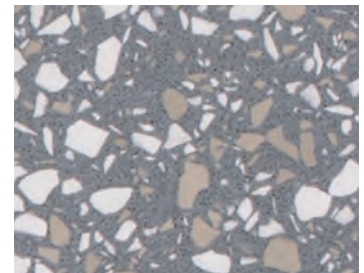
Stone Italiana redefines the Terrazzo look by expanding its usage from floors to countertops and maintaining the same quartz features: the contemporary rendition of a classic look.



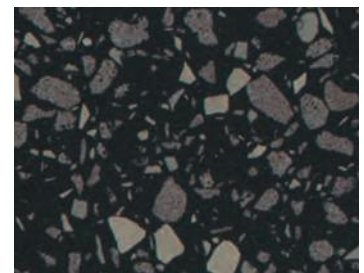
terrazzo_white polished or honed 2.0



terrazzo_base polished or honed 2.0



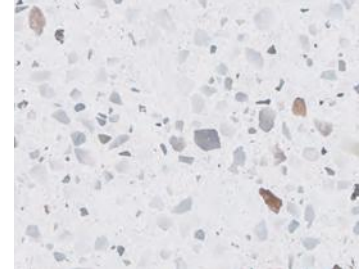
terrazzo_grey polished or honed 2.0



terrazzo_dark polished or honed 2.0

GRANIGLIO

Today marble grit floors are once again fashionable and come in modern colors. The innovative quartz in a grit look is an alternative to marble base, offering superior resistance, and the possibility of four colors to obtain the vintage style of Graniglio.



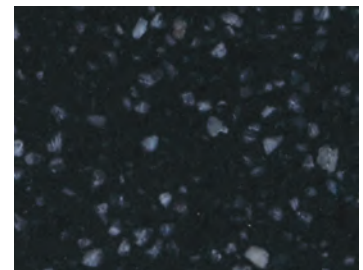
graniglio bianco polished



graniglio sabbia polished



graniglio grigio polished



graniglio nero polished

CRAKEN

Stone Italiana revives the concept of craquelé in a contemporary perspective by combining ancient techniques with the technological research of the quartz production. The real handmade production makes Craken a very exclusive and precious collection never seen before.



white_gray polished



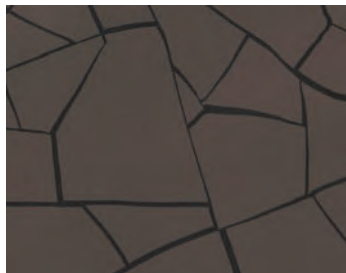
basic_white polished



white_black polished



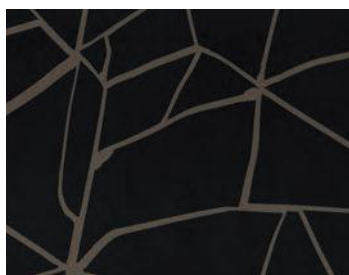
noisette_bordeaux polished



taupe_dark polished



black_white polished

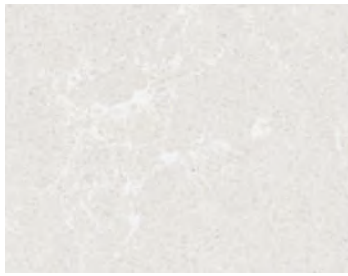


black_brown polished

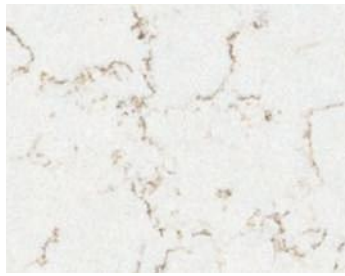


NATIVE

The Native Collection is characterized by a weave of light veins. Native is the anagram of "venati" the Italian word that describes materials with light vein patterns, such as stone, marble, or wood. The combination of a pleasing visual effect with the exceptional resistance of quartz makes Native Collection ideal for interiors and refined, timeless kitchens.



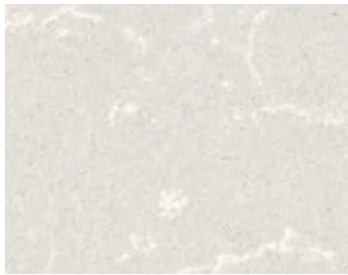
bianco artico polished



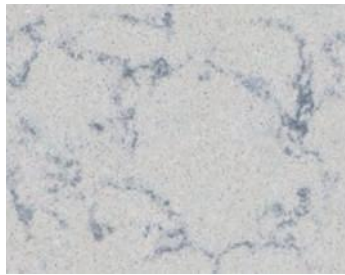
bianco tasmania polished



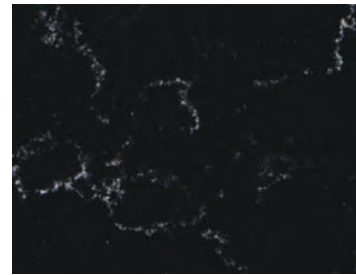
bianco cimbro polished



grigio atlantic polished



grigio nordico polished

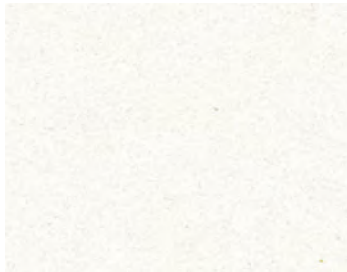


nero continental polished

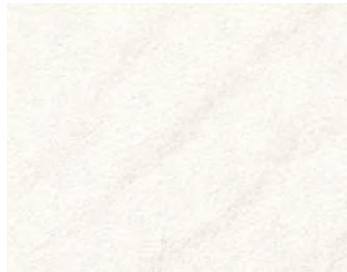


CARTAPIETRA

Cartapietra is a collection of natural color materials. It is considered to be a technologically improved stone that offers both durability and pleasing aesthetics that communicate vibrancy and emotion through surface texture.



superwhite 13 polished or honed 2.0



superwhite 13 textured 2.0



sabbiamarina polished or honed 2.0



sabbiamarina textured 2.0



basic polished or honed 2.0



basic textured 2.0



noisette polished or honed 2.0



noisette textured 2.0



greige polished or honed 2.0



greige textured 2.0



fango polished or honed 2.0



fango textured 2.0



grigio milano polished or honed 2.0



grigio milano textured 2.0



taupe polished or honed 2.0



taupe textured 2.0



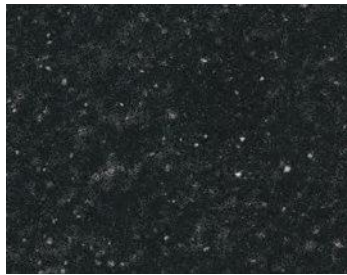
torba polished or honed 2.0



torba textured 2.0



imperiale 05 polished or honed 2.0



imperiale 05 textured 2.0



CEMENTINO

The Cementino series is designed in a contemporary and modern style. The three colors are slightly irregular, like large industrial surfaces. This palette of three grays in honed 2.0 finish offers aesthetics, minimal maintenance and great performance.



industry honed 2.0



metro honed 2.0



ground honed 2.0

DNA URBANO

DNA Urbano is a material manufactured with pebbles and other materials picked up by street cleaning vehicles. This product is the result of a collaboration between Stone Italiana and a company that handles waste management. DNA Urbano fits perfectly into the green philosophy embraced by Stone Italiana, a company that has always paid attention to environmental issues in its production process.



DNA Urbano polished



DNA Urbano honed 2.0



SIZES_SLABS AND TILES

NAME	FINISH	SLABS 120" × 56"						TILES					
		THICKNESS IN INCHES						THICKNESS IN INCHES					
		5/8"	3/4"	7/8"	5/8"	1 1/4"	1 17/64	24" × 24"	12" × 24"	16" × 16"	12" × 12"	12" × 48"	24 × 48"
CANDIDO	GLOSS		●			●							
OROPURO	GLOSS		●			●		●					
VIRGO	GLOSS		●			●		●					
CRISTAL WHITE	GLOSS		●			●		●					
BRILLANTE BIANCO	GLOSS		●			●		●					
LIDO	GLOSS		●			●		●					
BASE	GLOSS		●			●		●					
CRISTAL CREAM	GLOSS		●			●		●					
PITTI	GLOSS		●			●		●					
ASH	GLOSS		●			●		●					
BRILLANTE NERO	GLOSS		●			●		●					
SUPERBLACK	GLOSS		●			*		●					
CARTAPIETRA													
SUPERWHITE 13	GLOSS		●			●		●					
	GRAIN 2.0		●			●		●					
	ROCFACE 2.0			●			●					**	
SABBIAMARINA	GLOSS		●			●		●					
	GRAIN 2.0		●			●		●					
	ROCFACE 2.0			●								**	
BASIC	GLOSS		●			●		●					
	GRAIN 2.0		●			●		●					
	ROCFACE 2.0			●								**	
NOISETTE	GLOSS		●			●		●					
	GRAIN 2.0		●			●		●					
	ROCFACE 2.0			●								**	
GREIGE	GLOSS		●			●		●					
	GRAIN 2.0		●			●		●					
	ROCFACE 2.0			●			●					**	
FANGO	GLOSS		●			●		●					
	GRAIN 2.0		●			●		●					
	ROCFACE 2.0			●			●					**	
GRIGIO MILANO	GLOSS		●			●		●					
	GRAIN 2.0		●			●		●					
	ROCFACE 2.0			●			●					**	
TAUPE	GLOSS		●			●		●					
	GRAIN 2.0		●			●		●					
	ROCFACE 2.0			●			●					**	
TORBA	GLOSS		●			●		●					
	GRAIN 2.0		●			●		●					
	ROCFACE 2.0			●			●					**	
IMPERIALE 05	GLOSS		●			●		●					
	GRAIN 2.0		●			●		●					
	ROCFACE 2.0			●			●					**	
KSTONE													
KSOUL	GLOSS		●			●		●					
	GRAIN 2.0		●			●		●					
KGOLD	GLOSS		●			●		●					
	GRAIN 2.0		●			●		●					
KBROWN	GLOSS		●			●		●					
	GRAIN 2.0		●			●		●					
KWORK	GLOSS		●			●		●					
	GRAIN 2.0		●			●		●					
KSPACE	GLOSS		●			●		●					
	GRAIN 2.0		●			●		●					
KART	GLOSS		●			●		●					
	GRAIN 2.0		●			●		●					

NAME	FINISH	SLABS 120" x 56"						TILES	
		THICKNESS IN INCHES						THICKNESS IN INCHES	
		5/8"	3/4"	7/8"	5/8"	1 1/4"	1 17/64	3/8"	1/2"
24" x 24" 12" x 24" 16" x 16" 12" x 12" 12" x 48" 24" x 48" 48" x 48"									
NATIVE									
BIANCO ARTICO	GLOSS		●			●			
BIANCO TASMANIA	GLOSS		●			●			
BIANCO CIMBRO	GLOSS		●			●			
GRIGIO ATLANTIC	GLOSS		●			●			
GRIGIO NORDICO	GLOSS		●			●			
NERO CONTINENTAL	GLOSS		●			●			
ECOLLECTION									
LUNA	GLOSS		●			●			
GIOVE	GLOSS		●			●			
TERRA	GLOSS		●			●			
URANO	GLOSS		●			●			
CEMENTINO									
INDUSTRY	GRAIN 2.0		●			●			
METRO	GRAIN 2.0		●			●			
GROUND	GRAIN 2.0		●			●			
DNA URBANO									
DNA URBANO	GLOSS							●	
DNA URBANO	GRAIN 2.0							●	
METALLICO									
PLATINO	GLOSS		●			●		●	
ZINCO	GLOSS		●			●		●	
ACCIAIO	GLOSS		●			●		●	
GRANIGLIO									
GRANIGLIO BIANCO	GLOSS		●			●			
GRANIGLIO SABBIA	GLOSS		●			●			
GRANIGLIO GRIGIO	GLOSS		●			●			
GRANIGLIO NERO	GLOSS		●			●			
TERRAZZO									
TERRAZZO_WHITE	GLOSS		●			●		**	
	GRAIN 2.0		●			●		**	
TERRAZZO_BASE	GLOSS		●			●		**	
	GRAIN 2.0		●			●		**	
TERRAZZO_GREY	GLOSS		●			●		**	
	GRAIN 2.0		●			●		**	
TERRAZZO_DARK	GLOSS		●			●		**	
	GRAIN 2.0		●			●		**	
JAIPUR 14.15									
THYME 14.15	GRAIN 2.0		●						
VANILLA 14.15	GRAIN 2.0		●						
ANIS 14.15	GRAIN 2.0		●						
PEPPER 14.15	GRAIN 2.0		●						
CRAKEN									
WHITE_GRAY	GLOSS	●				*			
BASIC_WHITE	GLOSS	●				*			
WHITE_BLACK	GLOSS	●				*			
NOISETTE_BORDEAUX	GLOSS	●				*			
TAUPE_DARK	GLOSS	●				*			
BLACK_WHITE	GLOSS	●				*			
BLACK_BROWN	GLOSS	●				*			
BASE MARMO									
ALMOND WHITE	GLOSS							*	
PENNY LANE	GLOSS							*	

* UPON REQUEST

** MIN. ORDER QUANTITY 1,500 SF

SLABS THICKNESS 1/2" AND 9/16" (ROCFACE 2.0) UPON REQUEST

PORTFOLIO



ROME



MOSCOW

SLOVENIA





PARIS

NEW YORK



TECHNICAL DATA

STANDARD	MATERIAL	TEST RESULT
ANSI A137.1 - 2012 "WET DYNAMIC COEFFICIENT OF FRICTION (DCOF)"	ENGINEERED STONE POLISHED	AVERAGE: 0,50
ASTM C373 - 14A "WATER ABSORPTION, BULK DENSITY, APPARENT POROSITY AND APPARENT SPECIFIC GRAVITY"	ENGINEERED STONE POLISHED	AVERAGE: 0.1% IMPERVIOUS
ASTM C648 - 04 (2014) "BREAKING STRENGHT"	ENGINEERED STONE POLISHED	AVERAGE: 1089 LBF
ASTM C650 - 04 (2014) "RESISTANCE TO CHEMICAL SUBSTANCES"	ENGINEERED STONE POLISHED	<ul style="list-style-type: none"> - COMMON HOUSEHOLD AND CLEANING CHEMICALS: NOT AFFECTED - SWIMMING POOL CHEMICALS: NOT AFFECTED - ACIDS AND BASES: HYDROCHLORIC ACID SOLUTION (3% AND 18% (V/V) NOT AFFECTED - ACIDS AND BASES: POTASSIUM HYDROXIDE (30 G/L AND 100 G/L) AFFECTED
ASTM C1243 - 93 (2014) "RELATIVE RESISTANCE TO DEEP ABRASIVE WEAR"	ENGINEERED STONE POLISHED	AVERAGE: V= 64.4 (MM ³)



COORDINATION
Gianni Ruberti
Silvia Dalla Valle
Paola Dalla Valle

COPYRIGHT
2019





100% made in Italy



STRETTI.MARZSA

Via Garoglio, 213 - 37040 Somella - Verona Italy
Tel +39 0445 710710 - Fax +39 0445 710000
stretti@marzsa.com - www.stretti.com

